

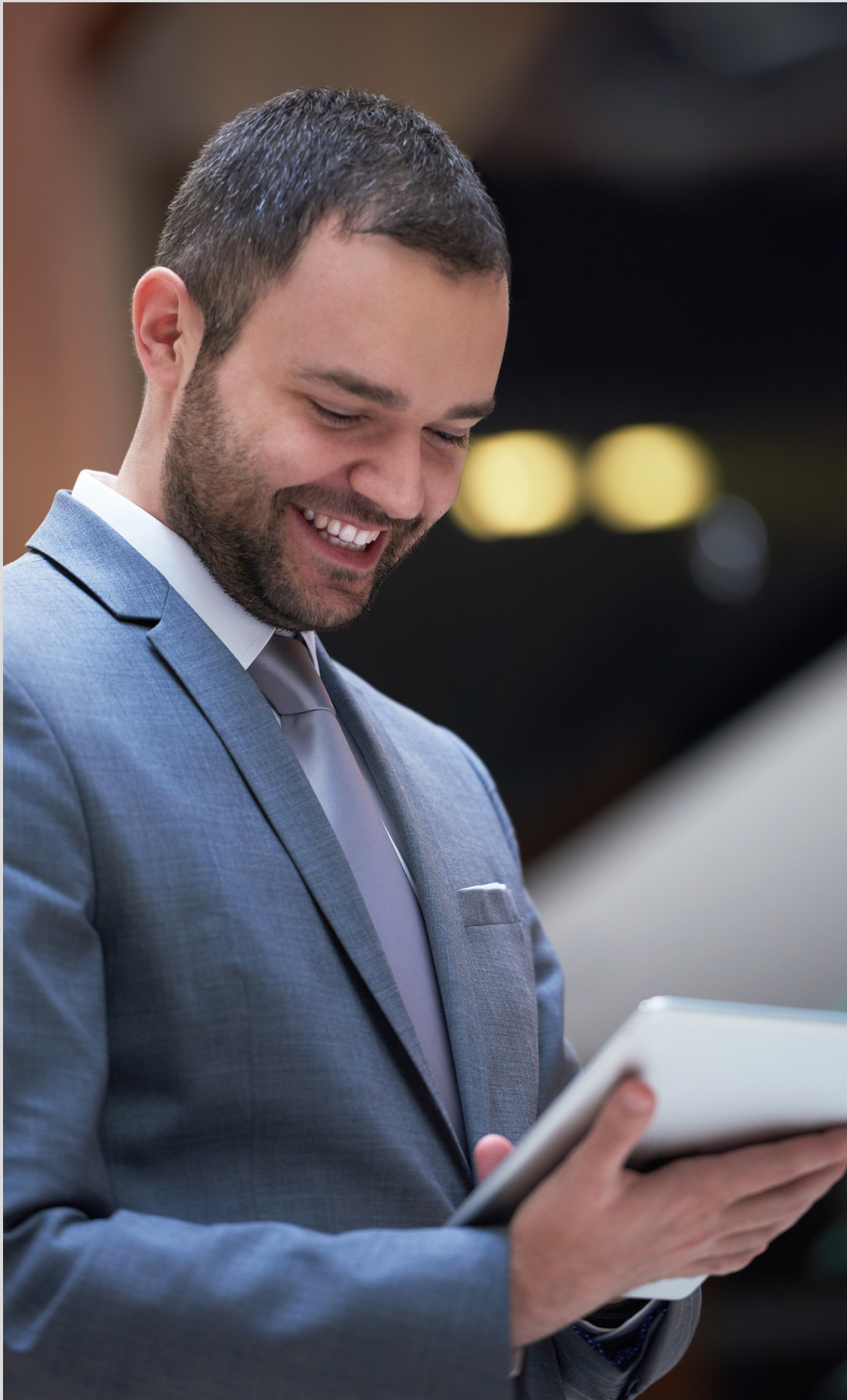


GracechurchPanel.

Share your experience, get the insights,
help raise the performance bar.



Gracechurch.



The Gracechurch Panel

The Gracechurch Panel is a community of insurance professionals who contribute to the overall improvement of the insurance industry, through regularly sharing their experiences through our independent benchmarking surveys.



What's the purpose of the Gracechurch Panel?

This platform connects peers and facilitates evidence-based discussion that fosters positive transformation in the industry.

We keep the Panel members informed about current trends – how the market has progressed, and where it's headed.

How does it work?

All we need is for you to complete up to three confidential surveys a year, (about 30 minutes of input overall).

In return you get exclusive access to our expanding portfolio of insights, events and facilitated discussions, helping you to stay current on the updates of the industry and play your part in creating positive change.



Who join the Gracechurch Panel?



Our exclusive panel is a balance of middle and senior ranking insurance professionals from across the market, giving you the insights overall as well as specialist classes of business.

The Gracechurch Panel is free to join.

Who can join?



Insurance professionals

Brokers, underwriters, claims advocates, insurance lawyers, Third Party providers and InsurTech's are all welcome.



Seniority

We strive for a representative and objective view of the market as a whole, and the Exchange comprises a cross-section of junior middle to senior executives.



Regions

Our expanding reports cover the major Global insurance hubs, including London Market, North America and Asia Pacific.

What do you receive?



Exclusive invites to networking events, webinars & focus groups.



Research summary trend trackers, people reports, content and insights.



The chance to contribute to and join service performance advisory groups.

Specialist insights

Our extensive and growing portfolio of reports are constantly evolving to reflect a fast changing Market, making you a part of the conversations that really drive high performance.

Underwriting Monitor

The leading independent report on corporate reputation and underwriting performance in the London Insurance Market.

Trading Spaces Monitor

Tracking broker experiences of the insurers' evolving trading floors, facilities and the Lloyd's room as well as e-trading systems.

e-Trading Platforms Monitor

The independent user experience survey of new e-Trading systems in the London Market.

Employer Brand Monitor

Providing Board-level decision-makers with a view of how their reputation and brand as an employer stands with the key talent and against the competition.

InsurTech Brand Monitor

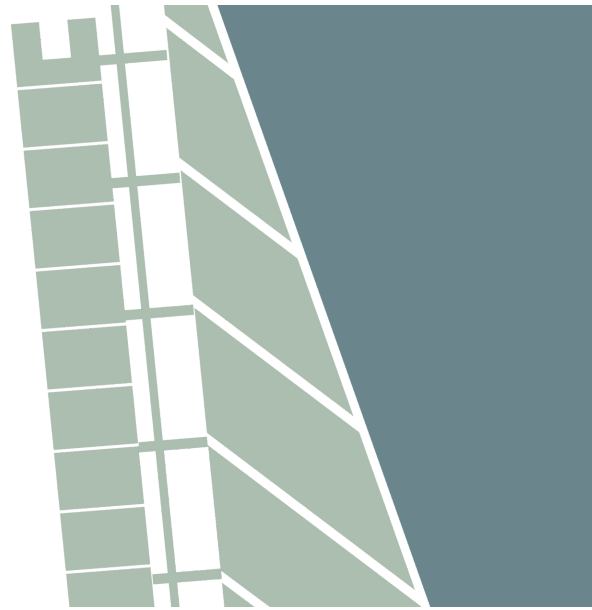
Independent Report on the leading InsurTech brands, including market share, user views and service performance.

Insurance Law Monitor

Independent benchmarking Report on the leading Insurance Law firms, evaluating reputation, share and service performance in London and APAC.

Growing worldwide coverage

We run our reports across the globe focusing specifically on each market, providing insights in the context of the local market circumstances.



London Market Claims

Established in 2009, reporting quarterly, the study creates robust and action-sensitive trends on claims service performance for London's top insurance companies.



UK Market Claims

Established in 2013, it is the leading independent report on insurers' commercial claims performance among claims specialists at key regional and national brokers across the UK.

**Be part of a growing
community of passionate
insurance professionals.**

Contact us



Ben Bolton
Managing Director
Gracechurch

E: bbolton@gracechurchconsulting.co.uk
T: +44 (0)203 865 1578

Andrew Gunn
Head of Operations
Gracechurch

E: agunn@gracechurchconsulting.co.uk
W: www.gracechurchconsulting.co.uk